



Julia McDaniel

LIGHTING DESIGN
PORTFOLIO

Cinderella

Lighting Design by Julia McDaniel

Artistic Director Shurrell Wiebe

Choreographed By Thereza-bryce-cotes, Kristi Franks, Carloyn Hanna,
And Shurrell Wiebe

Scenic Design By Corey Finzel

Costume Design By Malika Stepasiuk

Tyler Junior College – TJC Dance Academy
Rogers Palmer Performing Arts Center
Spring 2023

Cinderella is a ballet inspired by the tale of Cinderella. To convey the magic of the story, we used UV lights with costumes and set pieces painted with UV-reactive paint.

I also utilized fog machines to create a mask for the dancers covered in vines to rise from two trapdoors in the front of the stage. In scenes outside of the forest, I focused on contrasting the oppressive feeling of Cinderella in her home and the beauty and freedom of being at the ball.

Cinderella
Production Photo



Cinderella
Production Photo



Cinderella
Production Photo



Cinderella
Production Photo



Cinderella
Production Photo



Cinderella
Production Photo



Cinderella
Production Photo



Cinderella
Production Photo



Cinderella
Production Photo



Cinderella
Production Photo



Dance Alabama!
Lighting Design by Julia McDaniel
Technical Director and Resident Lighting Design Lyndell McDonald

The University of Alabama
Dance Theatre
Fall 2022

Dance Alabama! is a dance concert composed of student-choreographed pieces. The Dance Theatre is a traditional proscenium space with 400 seats. A rep plot is used, and each dance is allotted 10 lighting cues. I worked with each of my three choreographers to determine their desired vision for each piece and how best we could accommodate that in 10 cues or less. This was my first design in the Dance Theatre and my first time designing for dance.

Dance Alabama!
I'm Yours
Choreographed by Ashleigh Hartnett



Dance Alabama!
I'm Yours
Choreographed by Ashleigh Hartnett



Dance Alabama!
I'm Yours
Choreographed by Ashleigh Hartnett



Dance Alabama!
I'm Yours
Choreographed by Ashleigh Hartnett



Dance Alabama!
Swan Song
Choreographed by Morgan Strain



Dance Alabama!
Swan Song
Choreographed by Morgan Strain



Dance Alabama!
Swan Song
Choreographed by Morgan Strain



Dance Alabama!
Swan Song
Choreographed by Morgan Strain



Dance Alabama!
Finding Myself Again
Choreographed by Kyler Durrence



Dance Alabama!
Finding Myself Again
Choreographed by Kyler Durrence



Dance Alabama!
Finding Myself Again
Choreographed by Kyler Durrence



Dance Alabama!
Finding Myself Again
Choreographed by Kyler Durrence



I and You by Lauren Gunderson
Director Lisa Fischel
Lighting Design and Technical Director Julia McDaniel
Projection Design Kailey Gembler
Scenic Design Alondra Castro-Barbosa
Costume Design Sami Kumahata

Angelo State University
Modular Theatre
Spring 2022

I and You portrays a budding friendship between two teenagers battling homework and mortality. Unbeknownst to the characters, the production takes place in a bedroom within one of the character's mind. The lighting worked to convey this bend in reality by creating an enhanced environment encased in LED tape and string lights. At the end of the production, the encasing fell away to reveal the truth. This production was my first to serve as both technical director and lighting designer.

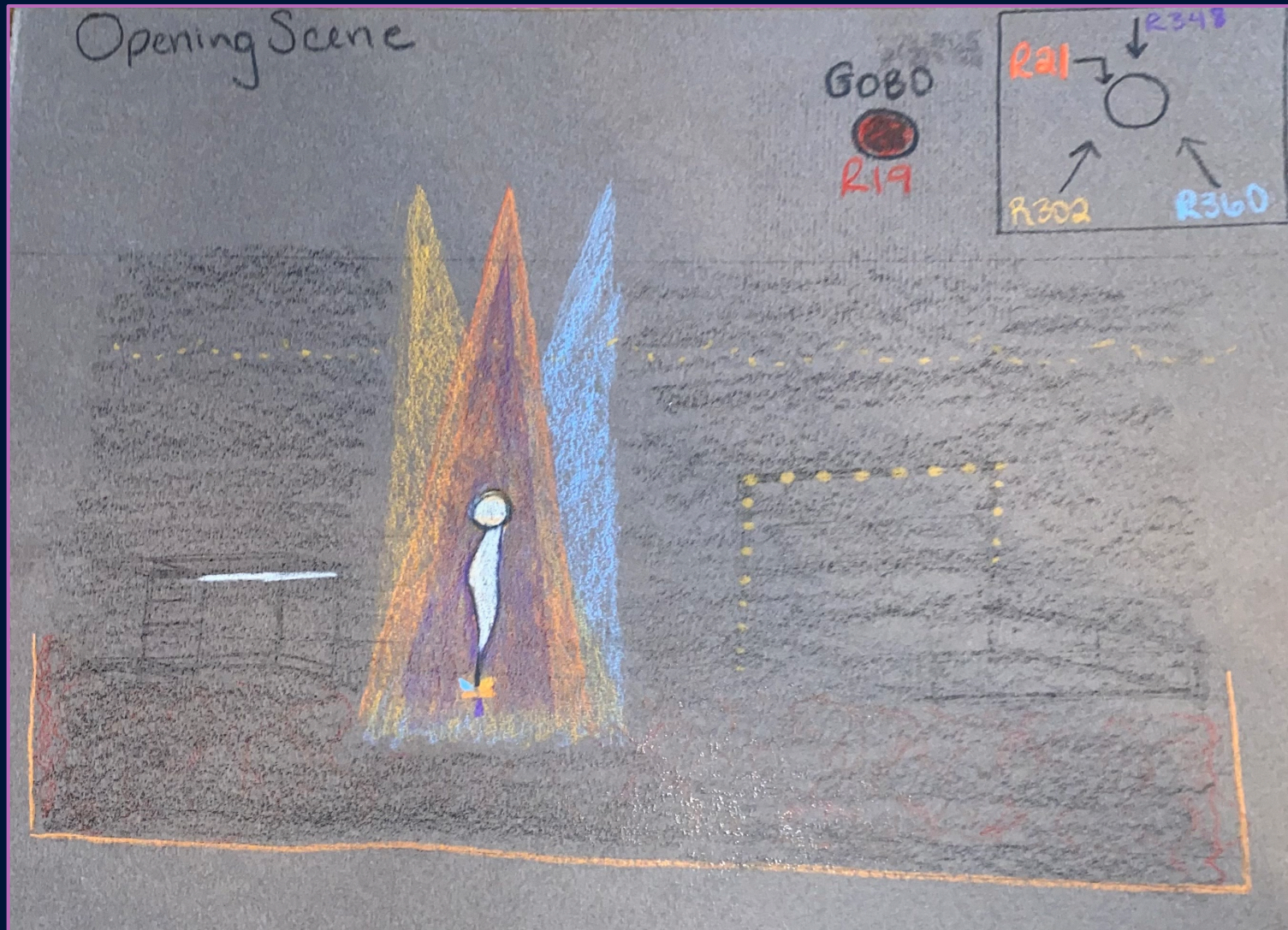
I and You
Production Photo



I and You
Production Photo



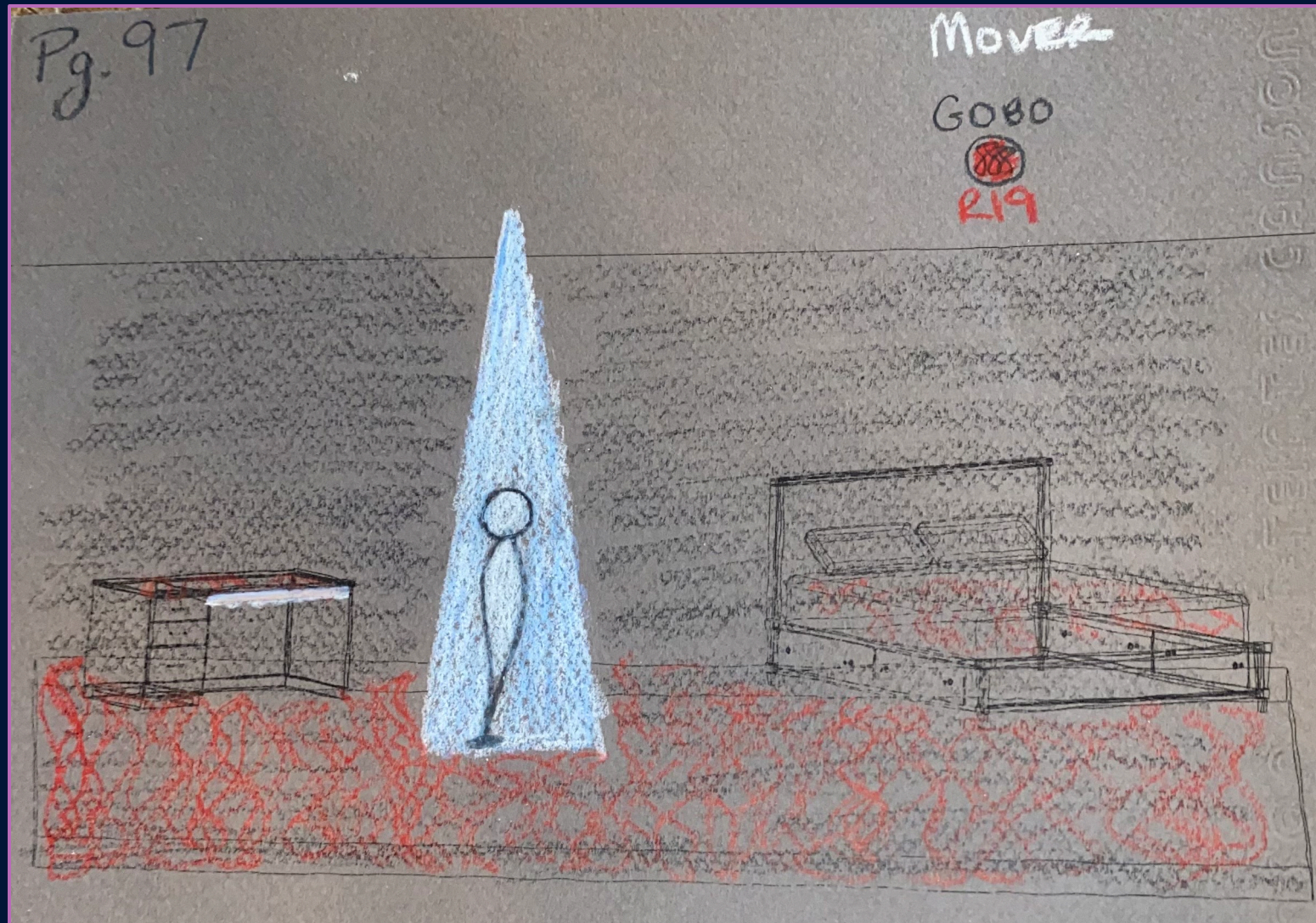
I and You Hand Rendering



I and You
Production Photo



I and You
Hand Rendering







I and You
Production Photo

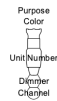


I and You Light Plot

Light

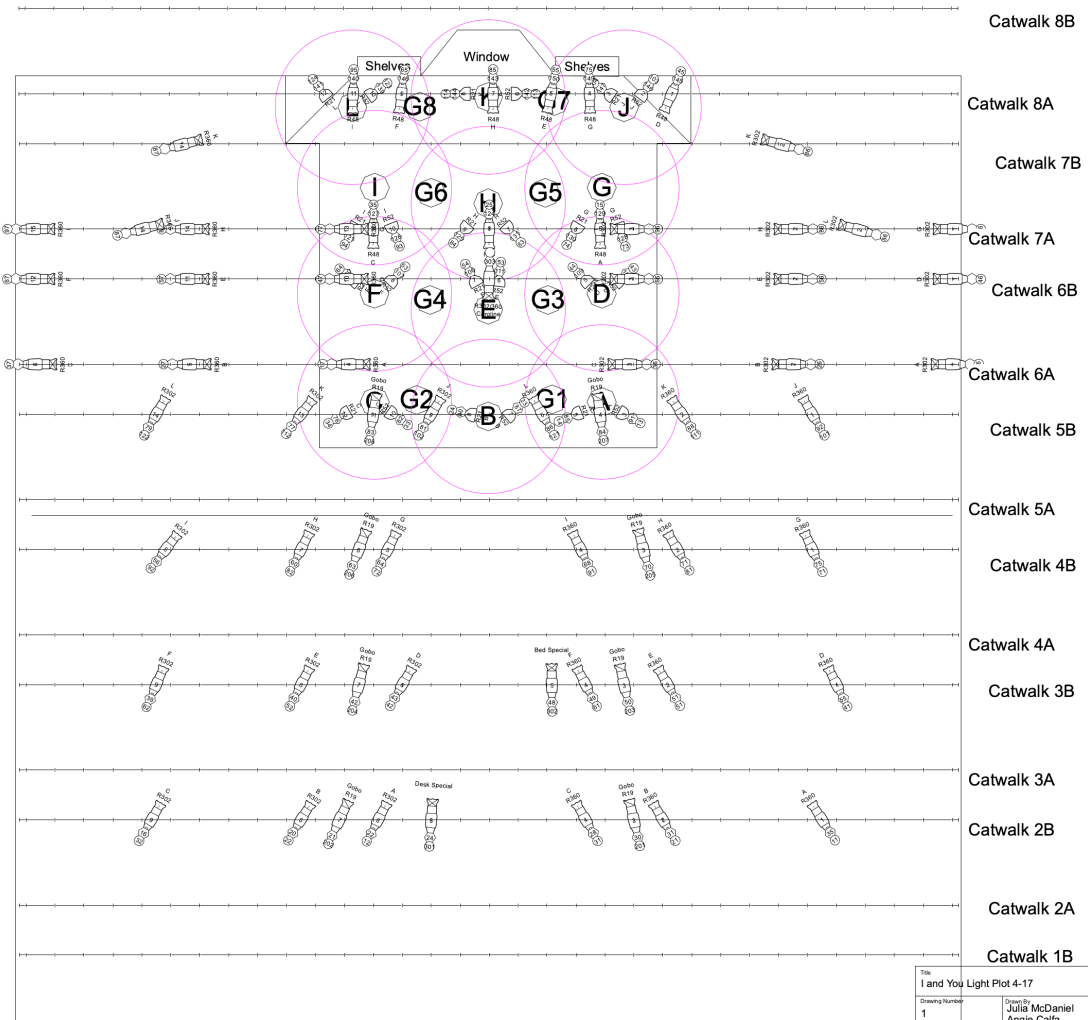
	ETC Source4 19deg @ 575w	25
	ETC Source 4 26° @ 575w	8
	ETC Source4 Jr Zoom @ 575w	33
	ETC Source4 PAR MFL @ 575w	24

Typical



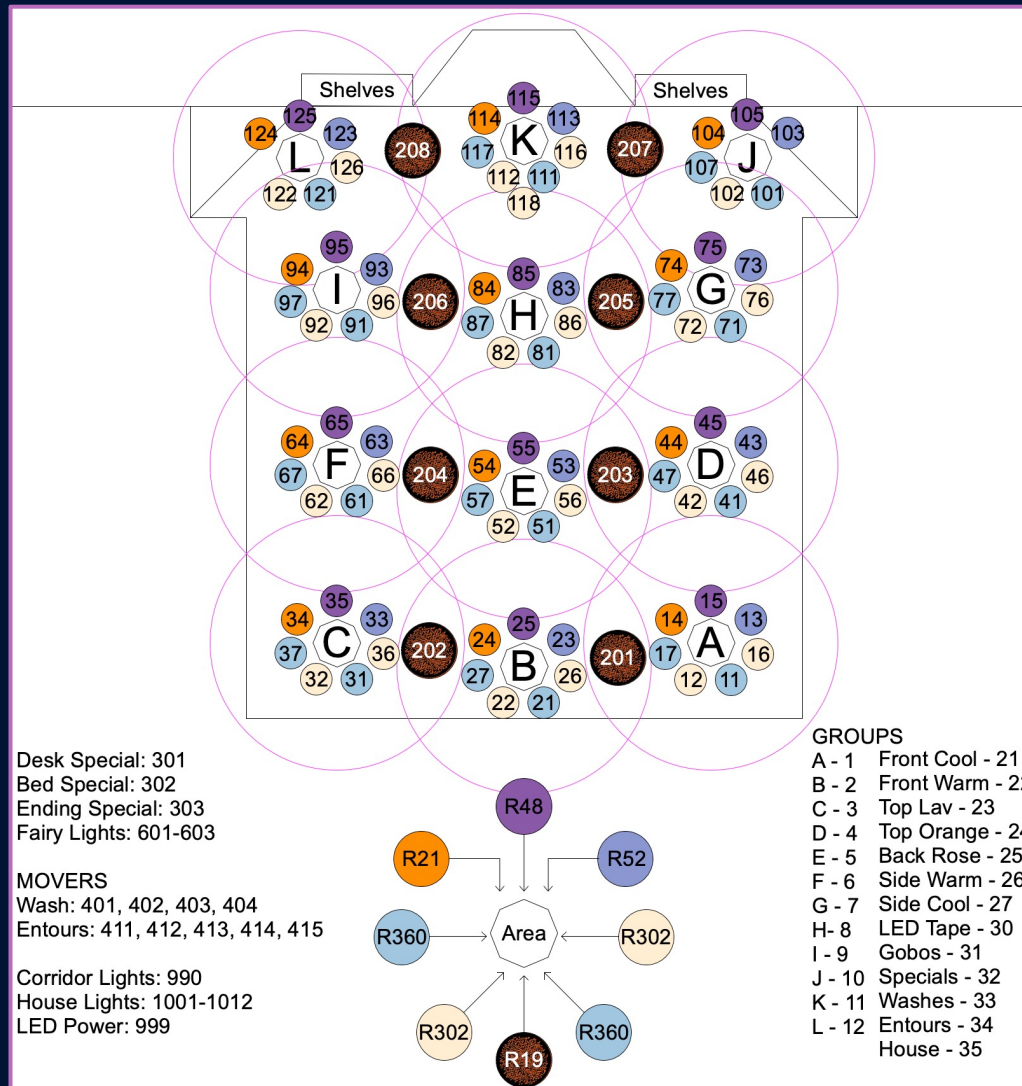
Color Summary

Color	Size	Count
R19	6.25"	8
R21	7.5"	12
R48	6.25"	9
R52	7.5"	12
R302	6.25"	23
R302/360	6.25"	1
R360	6.25"	23



Title I and You Light Plot 4-17		
Drawing Number 1	Drawn by Julia McDaniel Angie Calia	Date 4/17/22
CAD File Name IandYouLightPlot4-17		

I and You Magic Sheet



Wit by Margaret Edson
Director Ashley Love
Lighting and Projection Design Julia McDaniel
Scenic Design Derek Salazar
Costume Design Matthew Jackson

Angelo State University
Modular Theatre
Spring 2018

Wit explores the complexities of humanity and dignity through the lens of Vivian Bearing, a stoic professor in the throes of ovarian cancer. The story transitions between the past and the present, and the lighting portrayed this through color and texture. The past was warm and textured with script, while the present was cold and textured with typed medical information. This production was my first projection design and my first lighting design in the Modular Theatre.

Award:
KCACTF Meritorious Achievement in Lighting Design

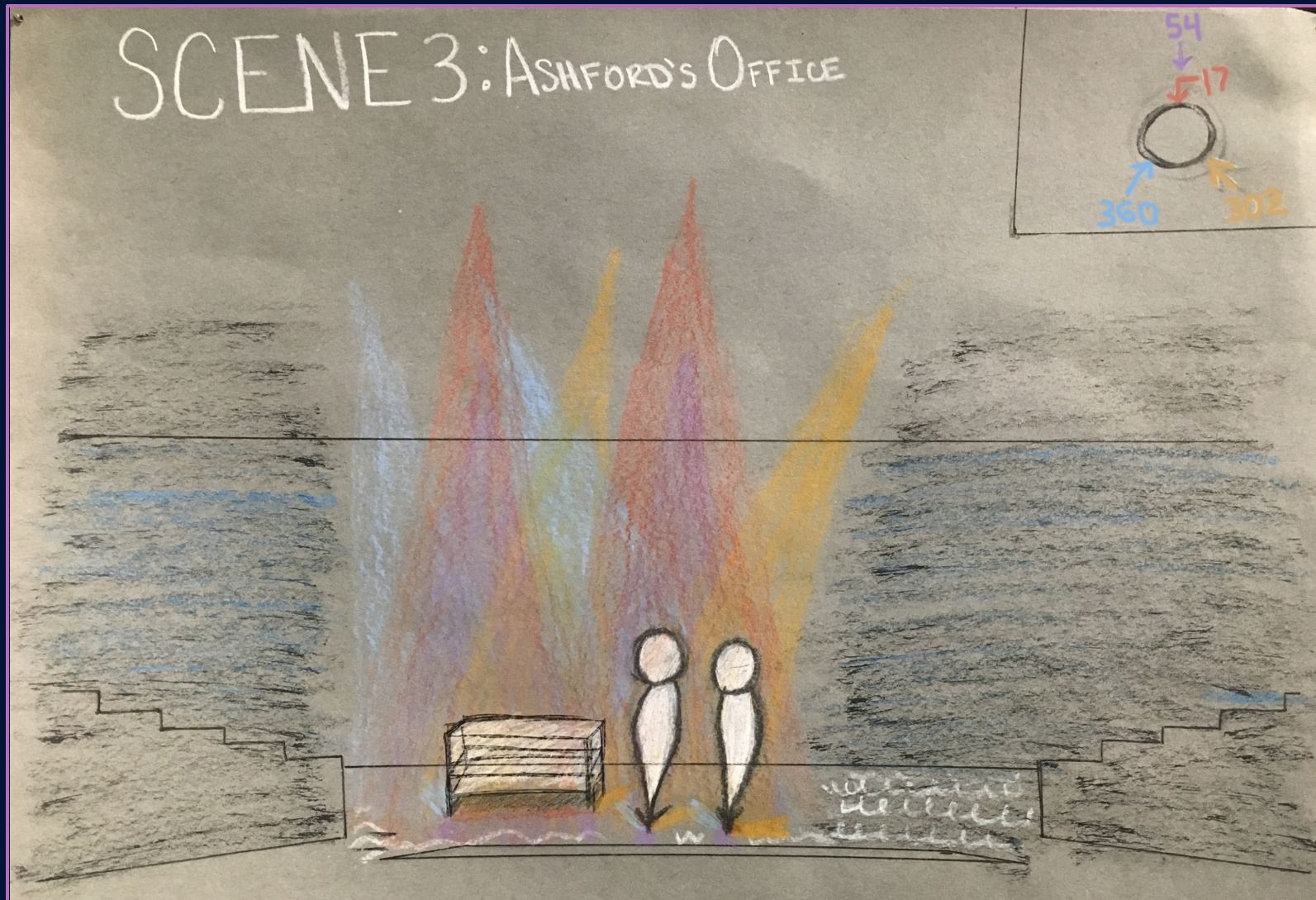
Wit
Production Photo



Wit
Production Photo



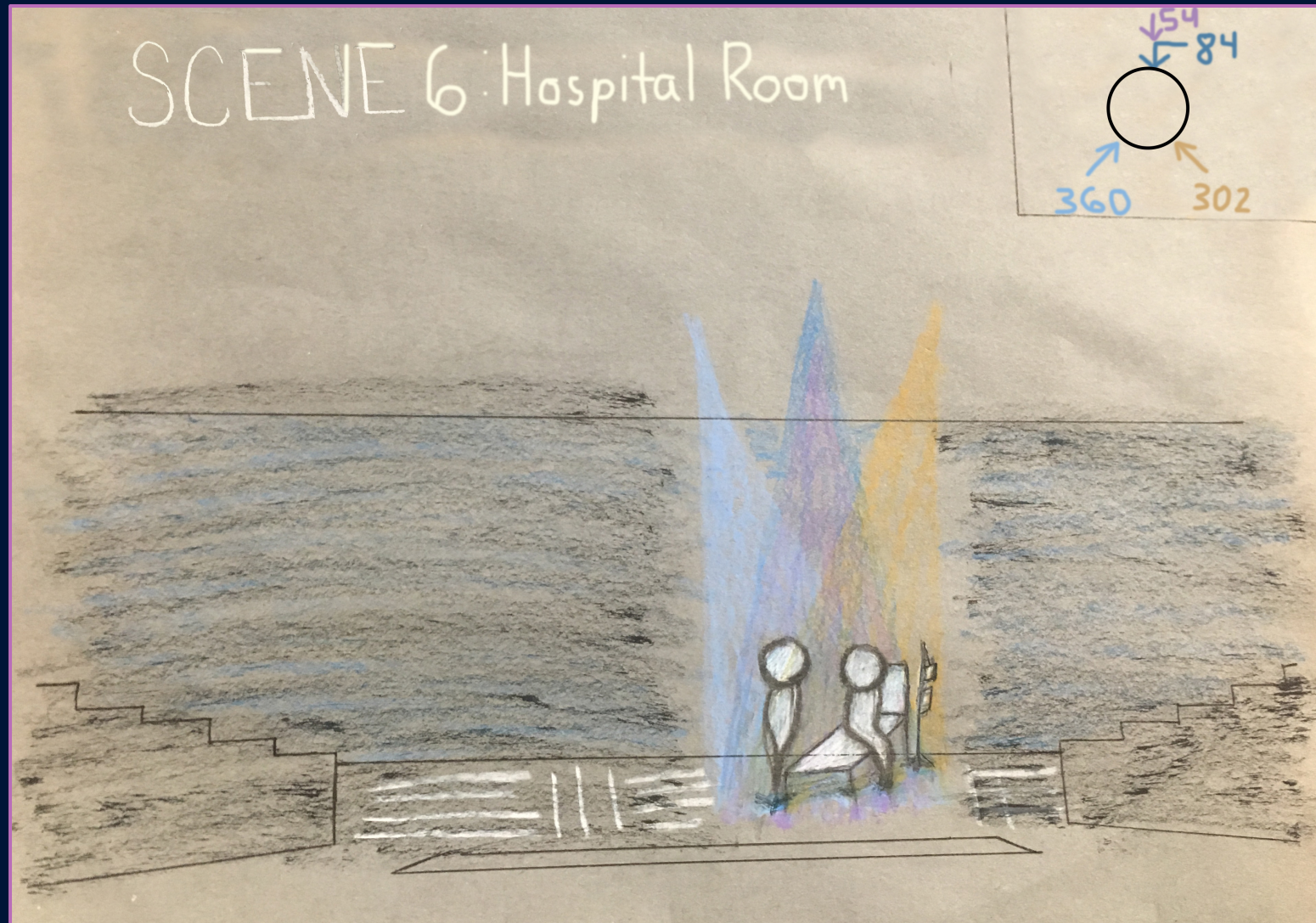
Wit
Hand Rendering



Wit
Production Photo



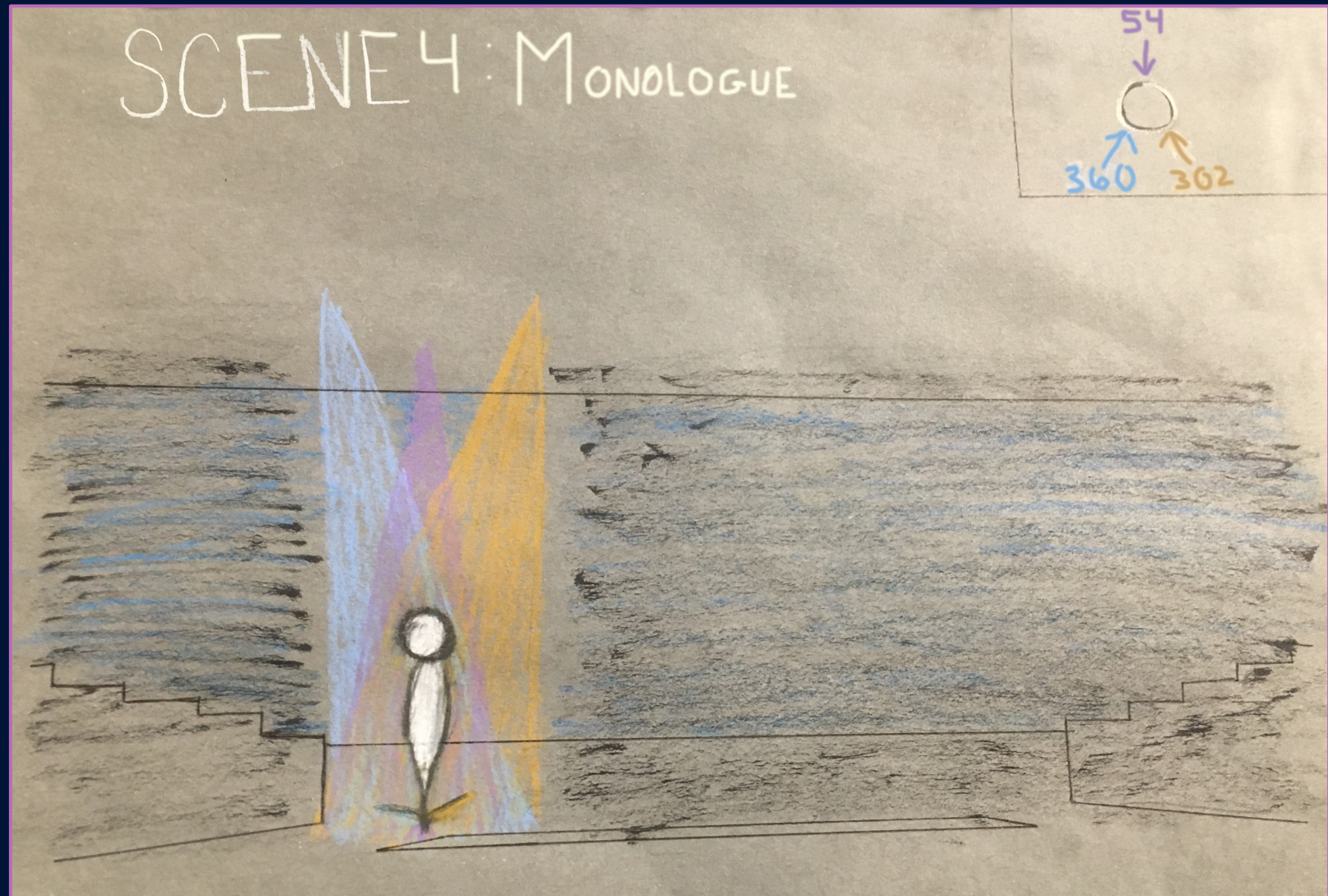
Wit
Hand Rendering



Wit
Production Photo



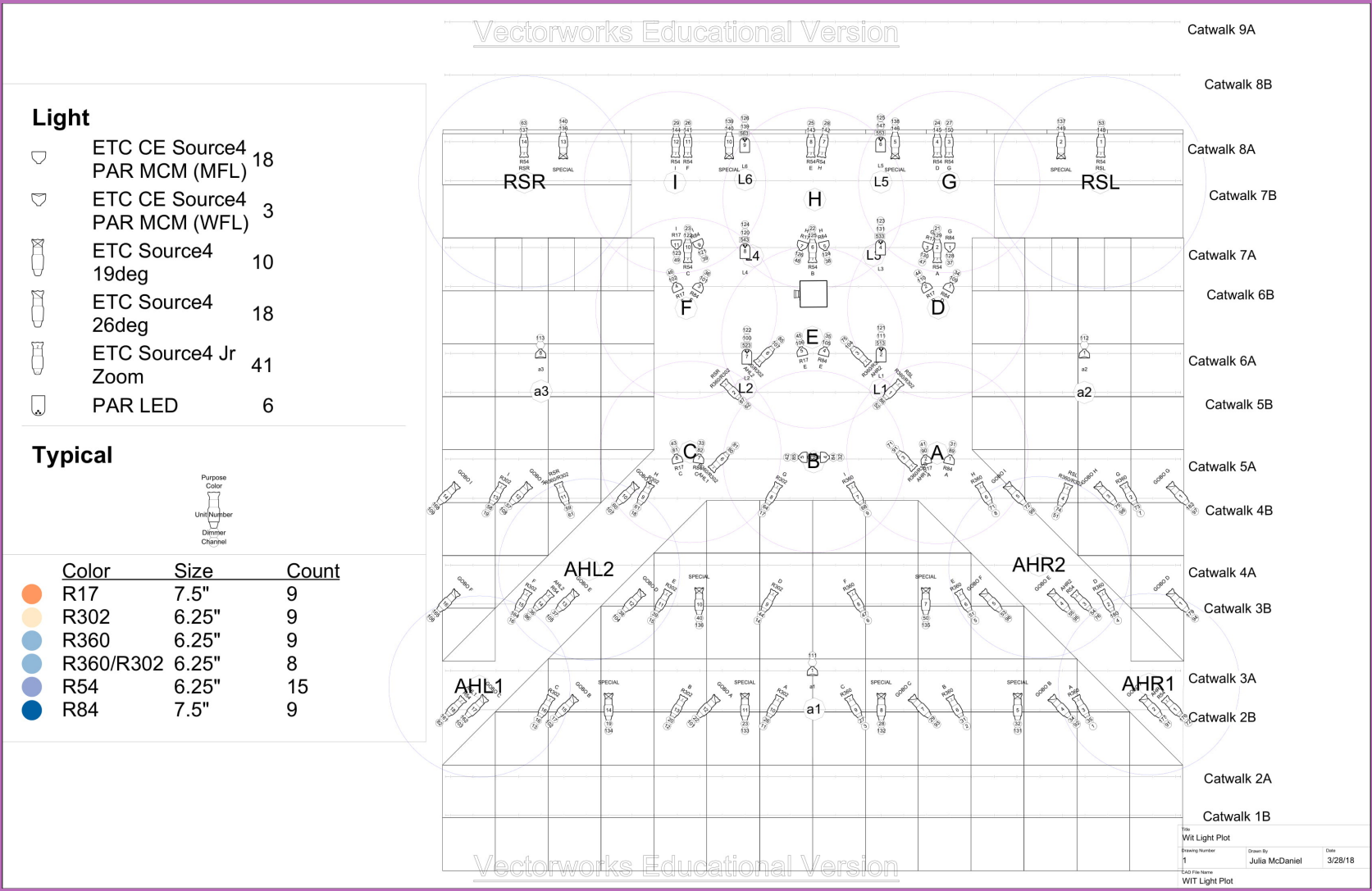
Wit
Hand Rendering



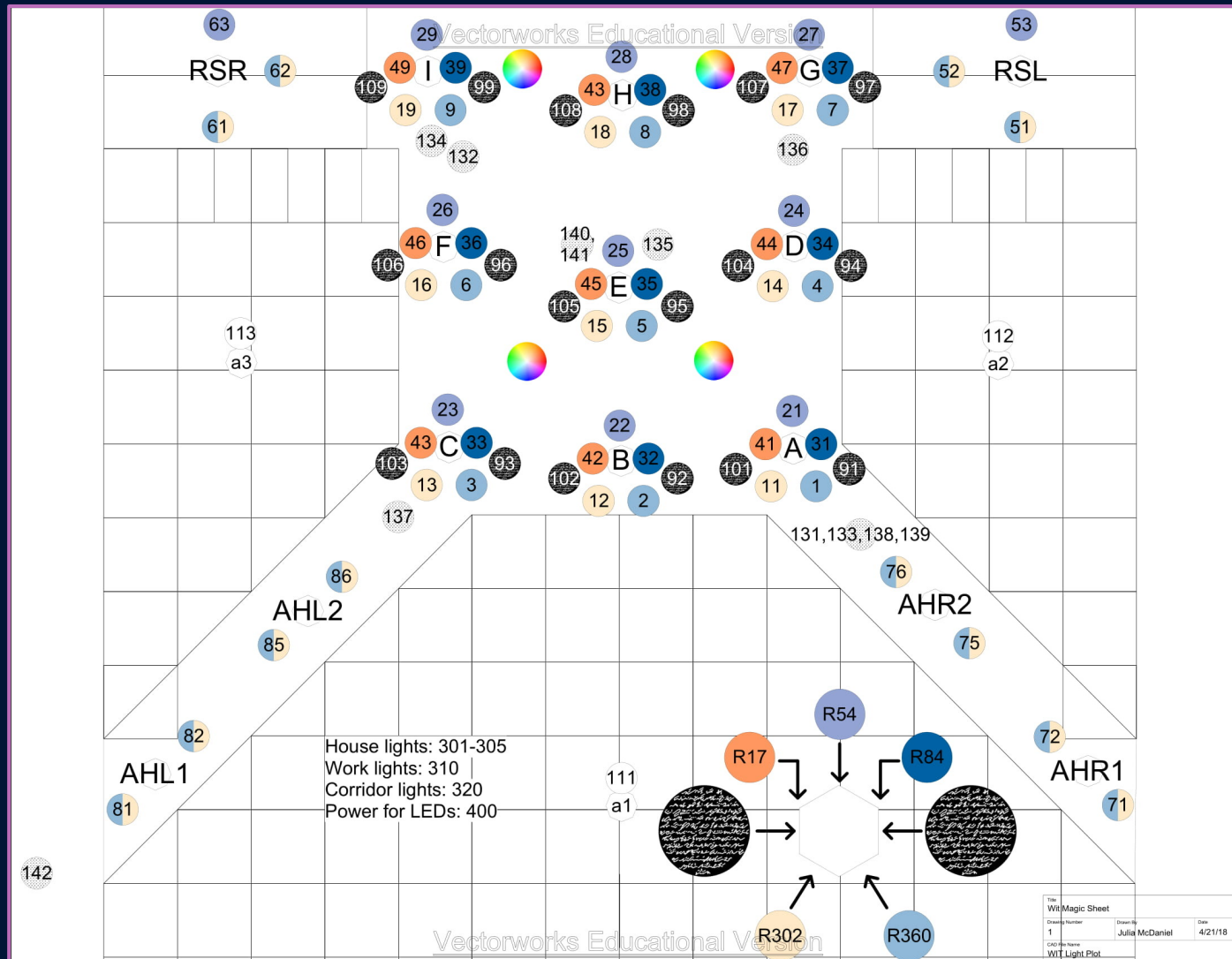
Wit
Production Photo



Wit Light Plot



Wit Magic Sheet



Julius Caesar by William Shakespeare
Director Mike Burnett
Lighting Design Julia McDaniel
Projection Design Lindsey Jones
Scenic Design Samantha Lewis
Costume Design Kala Young

Angelo State University
Auditorium
Fall 2016

The Tragedy of Julius Caesar tells the story of the assassination of Julius Caesar. This production was set in present-day U.S.A. and integrated modern technology and social media. The lighting took a Brechtian approach by having the lighting instruments visible, leaving the house lights up throughout the show, and creating highly spectacle-focused moments. This was my second lighting design and my first lighting design in the Auditorium.

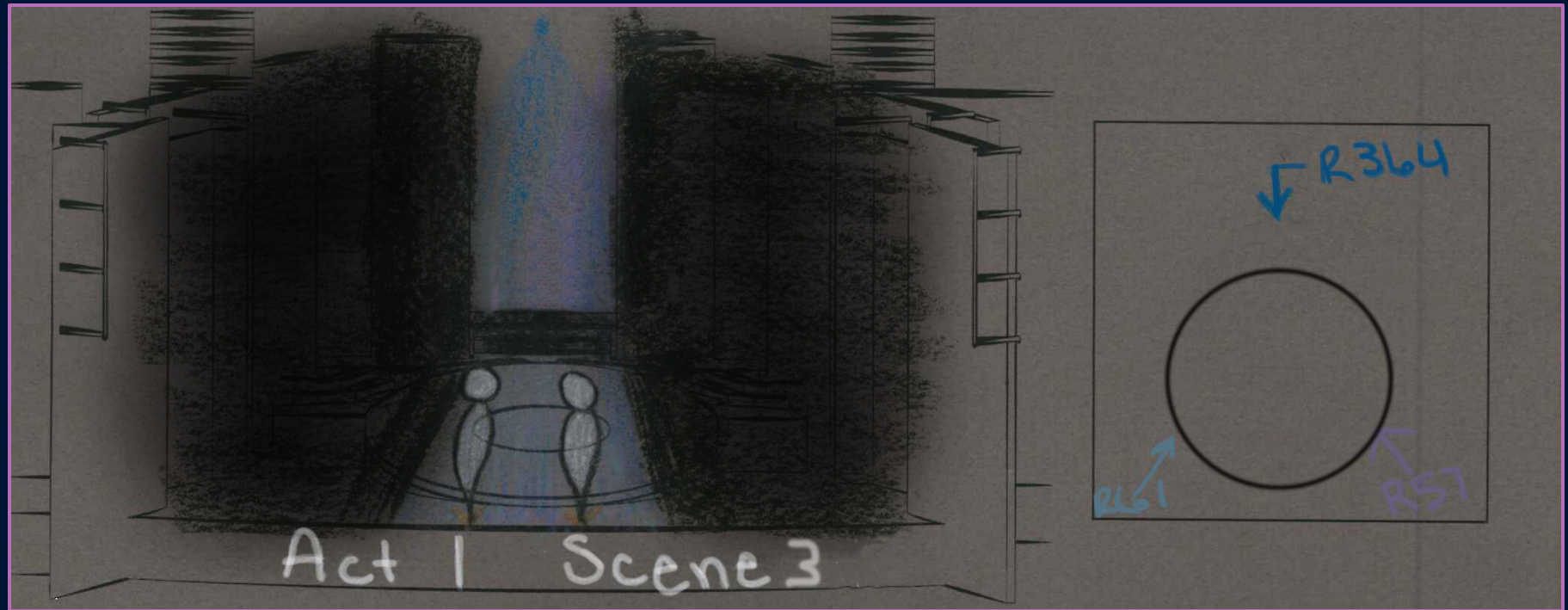
Awards:

National Partners of American Theatre Excellence in Theatrical Design
Barbizon Excellence in Lighting Design Runner Up

Julius Caesar
Production Photo



Julius Caesar
Hand Rendering



Julius Caesar
Production Photo



Julius Caesar
Hand Rendering

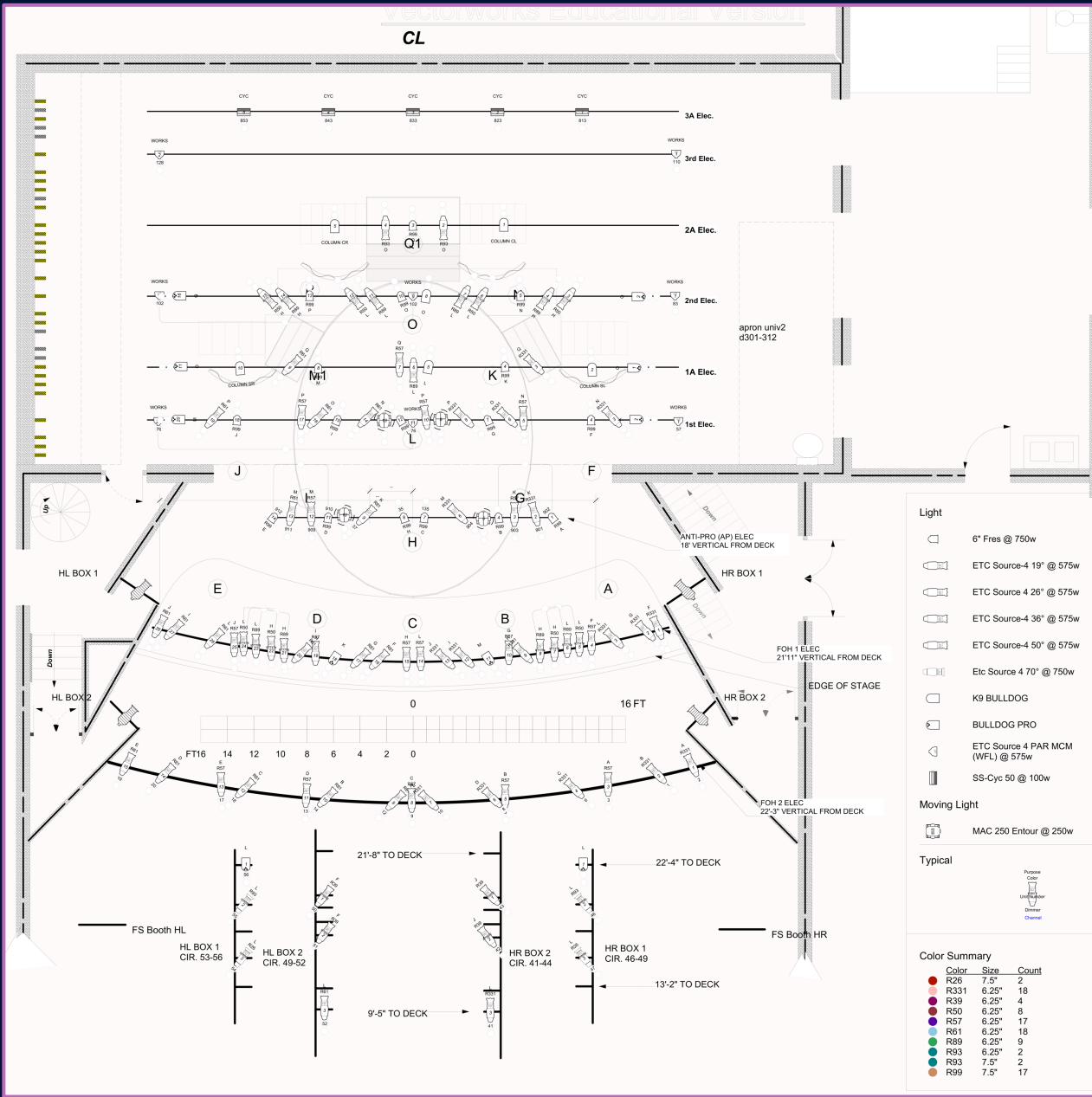


Julius Caesar
Production Photo

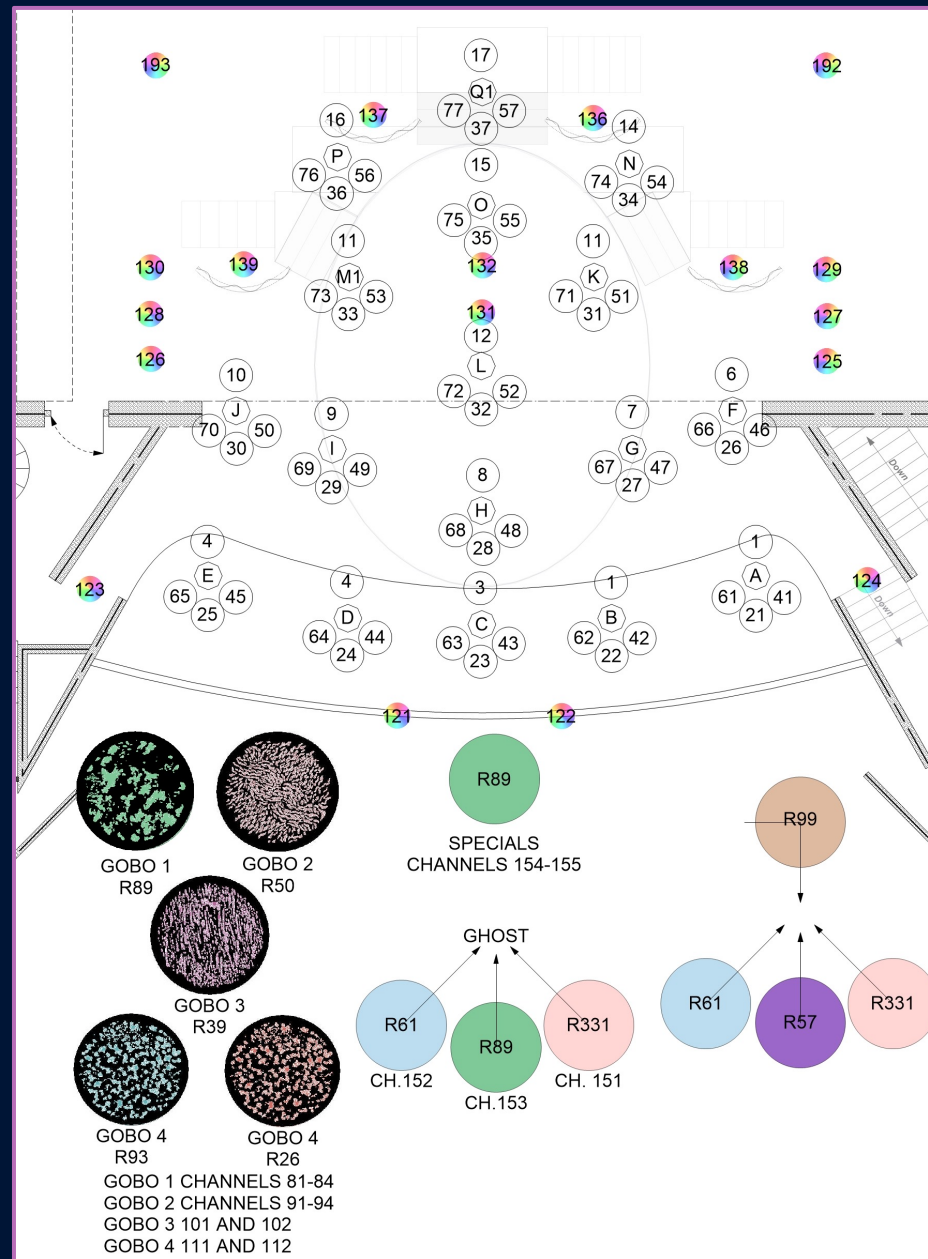


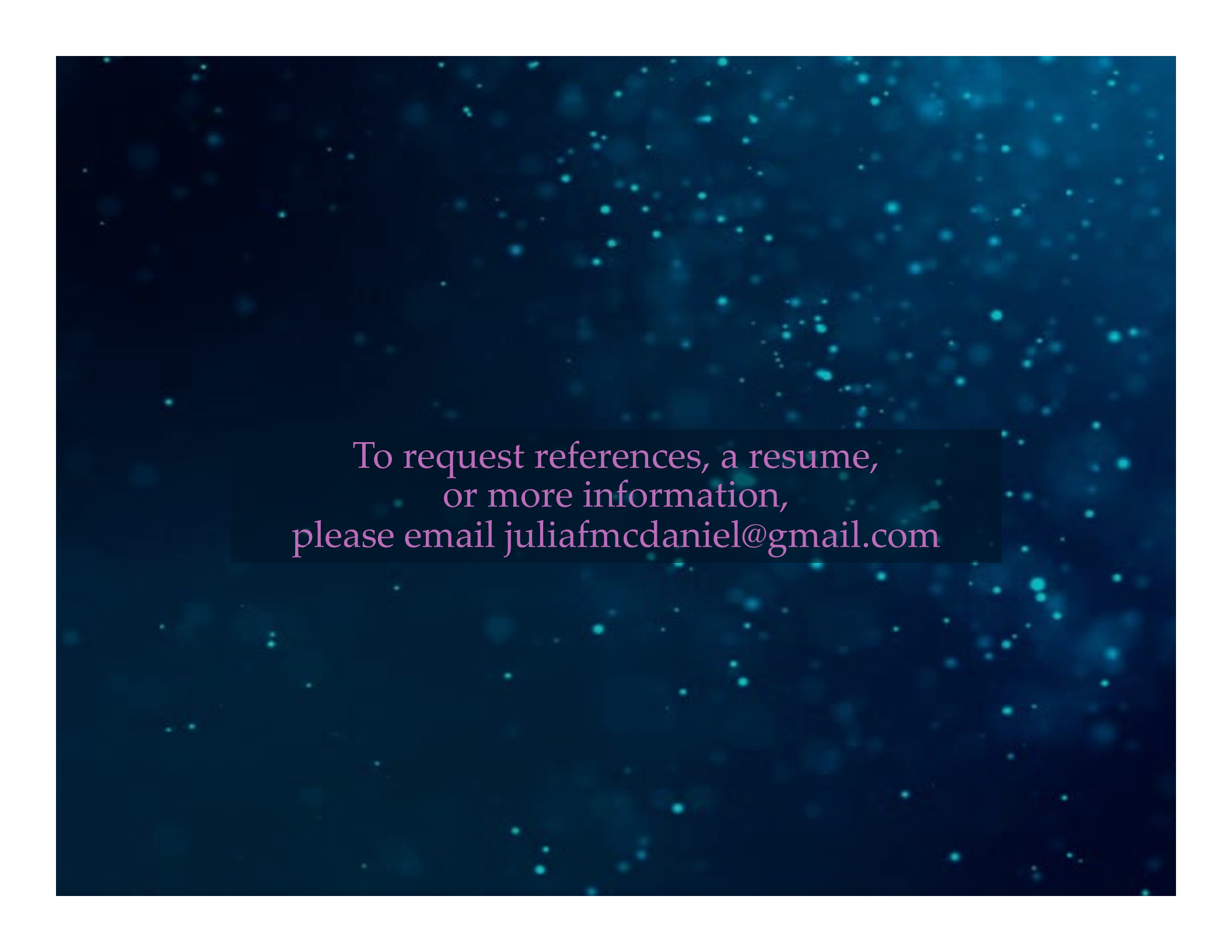
Julius Caesar

Light Plot



Julius Caesar Magic Sheet





To request references, a resume,
or more information,
please email juliafmcdaniel@gmail.com